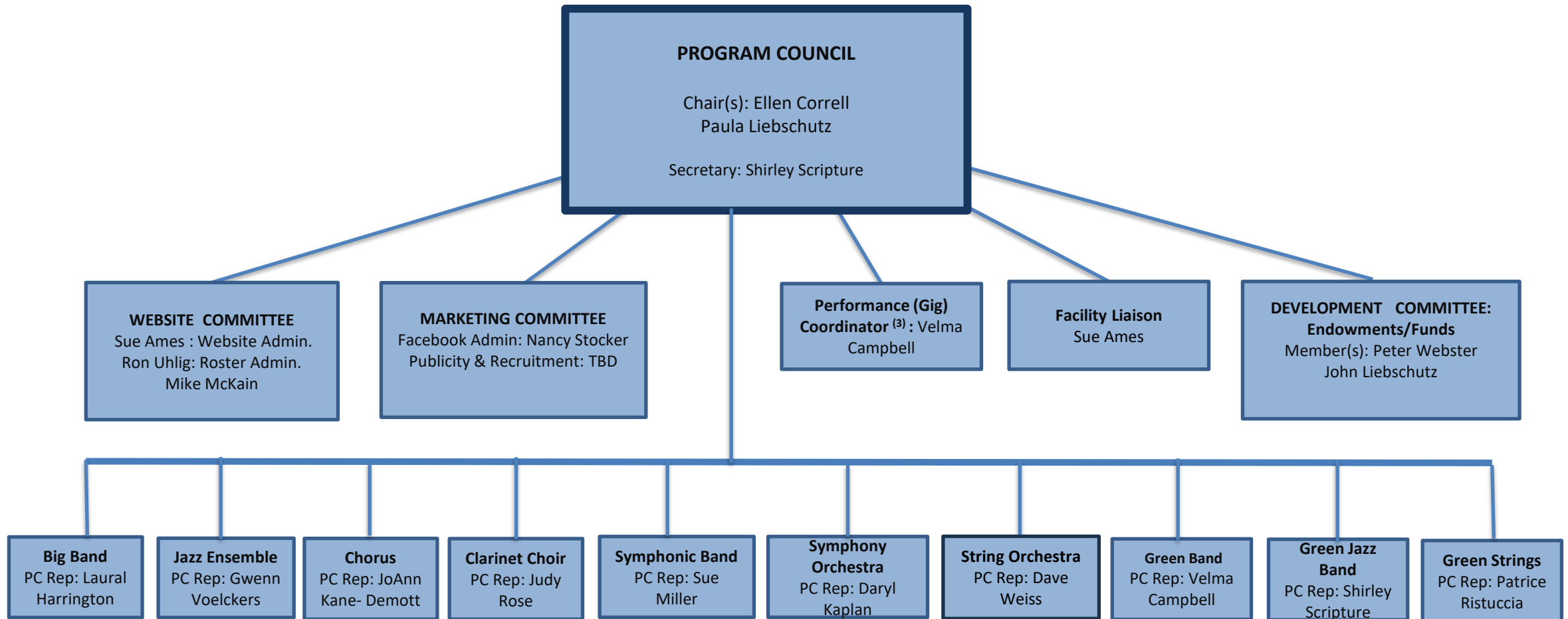


# Eastman - Rochester New Horizon Program Council



Notes:

- (1) Groups with 15 or more members encouraged to select a Program Council Representative. Small group ensembles (e.g. Antique Brass, Brasso Profundo, Flute Ensemble, Saxophone Ensemble) are comprised in large part by members already participating in other groups. Members are always welcome to attend meetings.
- (2) Intra-group social events, appreciation gifts, guest conductor arrangements and gig scheduling are at the discretion of each music group and their Program Council Representative.
- (3) Gig Coordinator: Gig scheduling resides with each ensemble/conductor. The Coordinator role is to (1) field outside requests and pass on to the appropriate ensemble and (2) inform the website administrator, Facebook Admin. and Chair(s) of performance date(s).